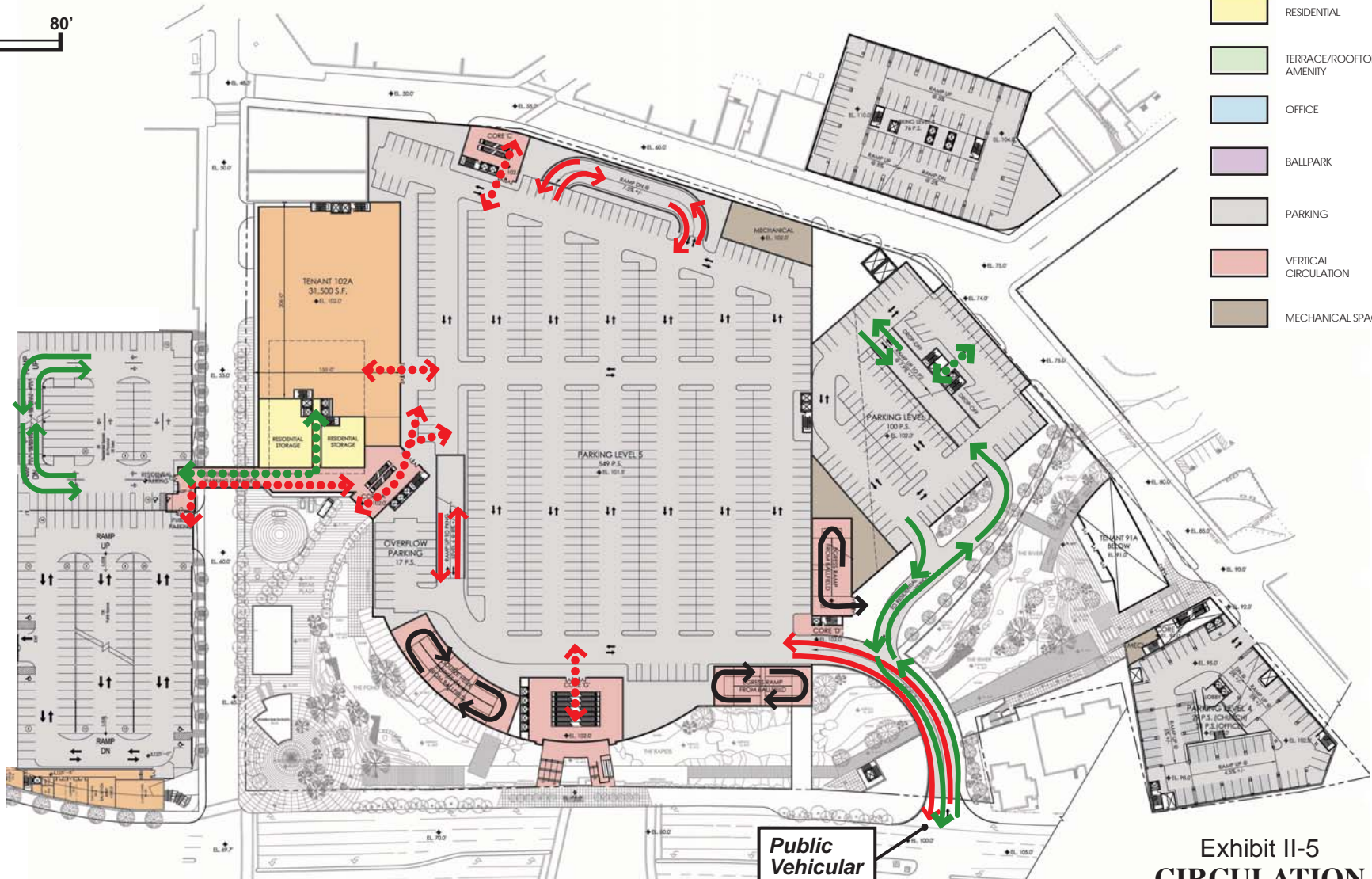


- RETAIL/RESTAURANT
- RESIDENTIAL
- TERRACE/ROOFTOP AMENITY
- OFFICE
- BALLPARK
- PARKING
- VERTICAL CIRCULATION
- MECHANICAL SPACE



- Pedestrian Circulation (Residents)
- Vehicular Circulation (Residents)
- Pedestrian Circulation (Public)
- Vehicular Circulation (Public)
- Ballpark and Emergency Egress

**Public
Vehicular
Access 5**

Exhibit II-5
**CIRCULATION
FLOOR PLAN - LEVEL 102'
RIVER PARK CENTER**

SFC PHASE I PROJECTS

STRUEVER FIDELCO CAPPELLI LLC