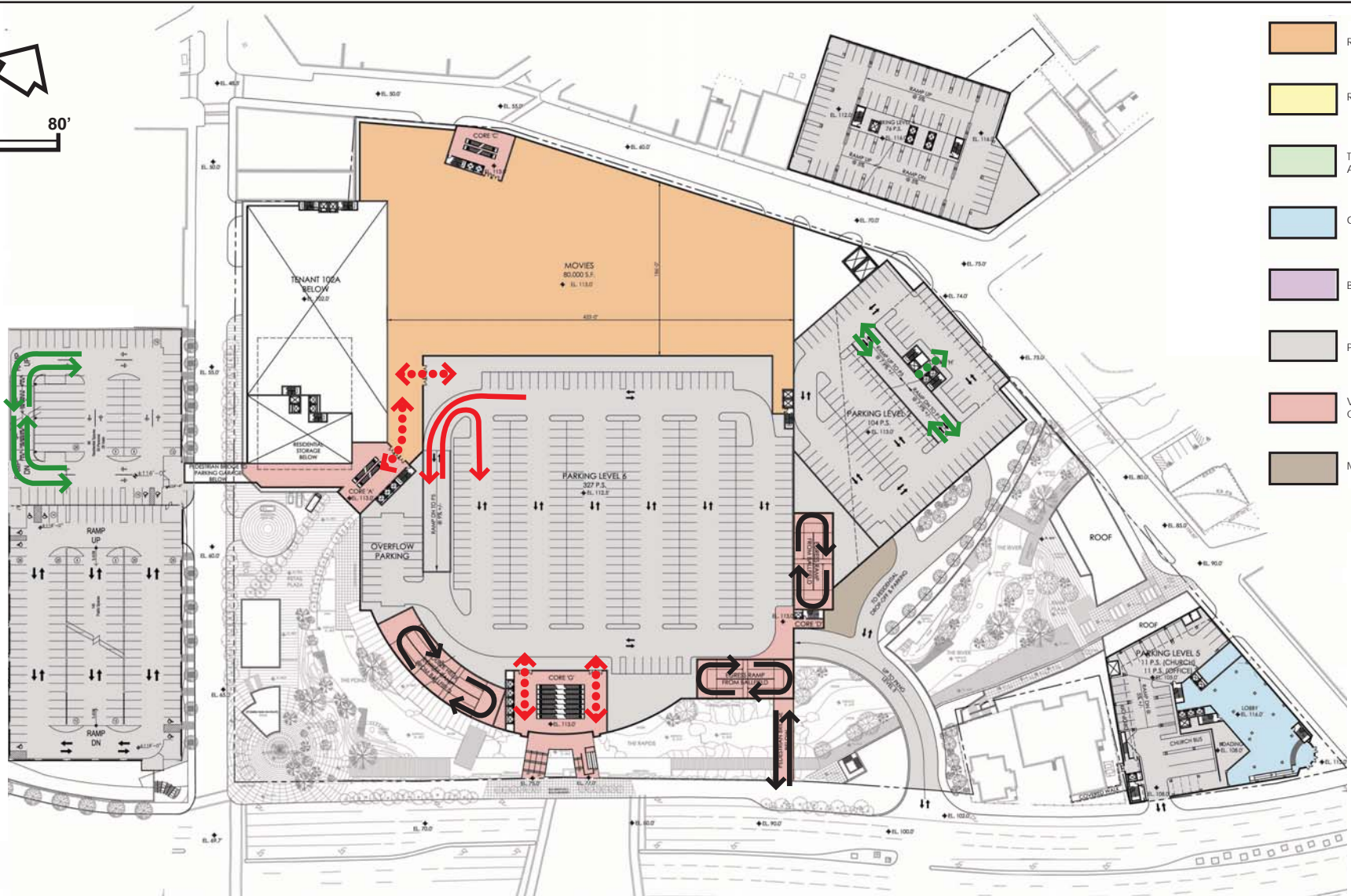


- RETAIL/RESTAURANT
- RESIDENTIAL
- TERRACE/ROOFTOP AMENITY
- OFFICE
- BALLPARK
- PARKING
- VERTICAL CIRCULATION
- MECHANICAL SPACE



- ➔ Pedestrian Circulation (Residents)**
- ➔ Vehicular Circulation (Residents)**
- ➔ Pedestrian Circulation (Public)**
- ➔ Vehicular Circulation (Public)**
- ➔ Ballpark and Emergency Egress**

Exhibit II-6  
**CIRCULATION**  
**FLOOR PLAN - LEVEL 113'**  
**RIVER PARK CENTER**

**SFC PHASE I PROJECTS**  
 STRUEVER FIDELCO CAPPELLI LLC